



ELAN GROUP OF COMPANIES

"locally anchored, globally connected"

1

About Elan

Mission Statement





MISSION STATEMENT

Customers

We value add to continuously enhance our reputation

Employees

Teamwork, ability to attract and continuously nurturing

Shareholders

A superior return through strong execution of our strategies

Society

To live up to our responsibilities to serve and return to the society



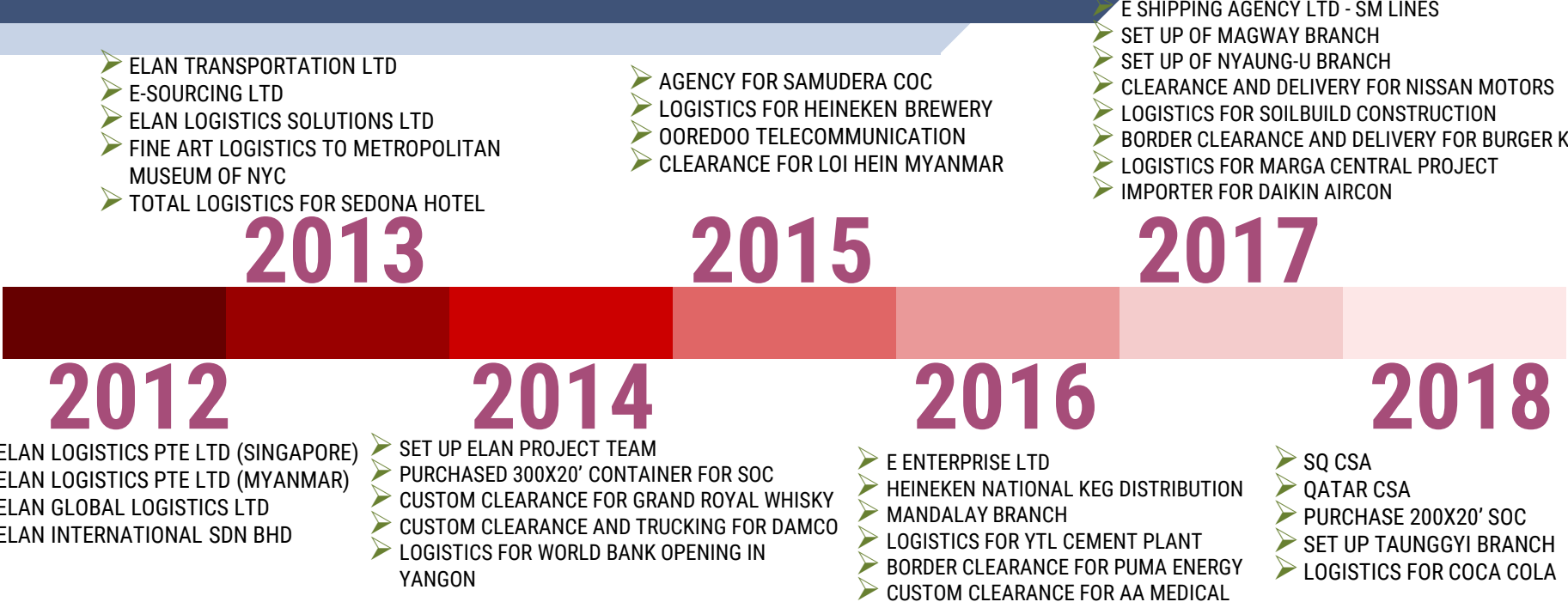
2

About Elan Timeline





TIMELINE



3

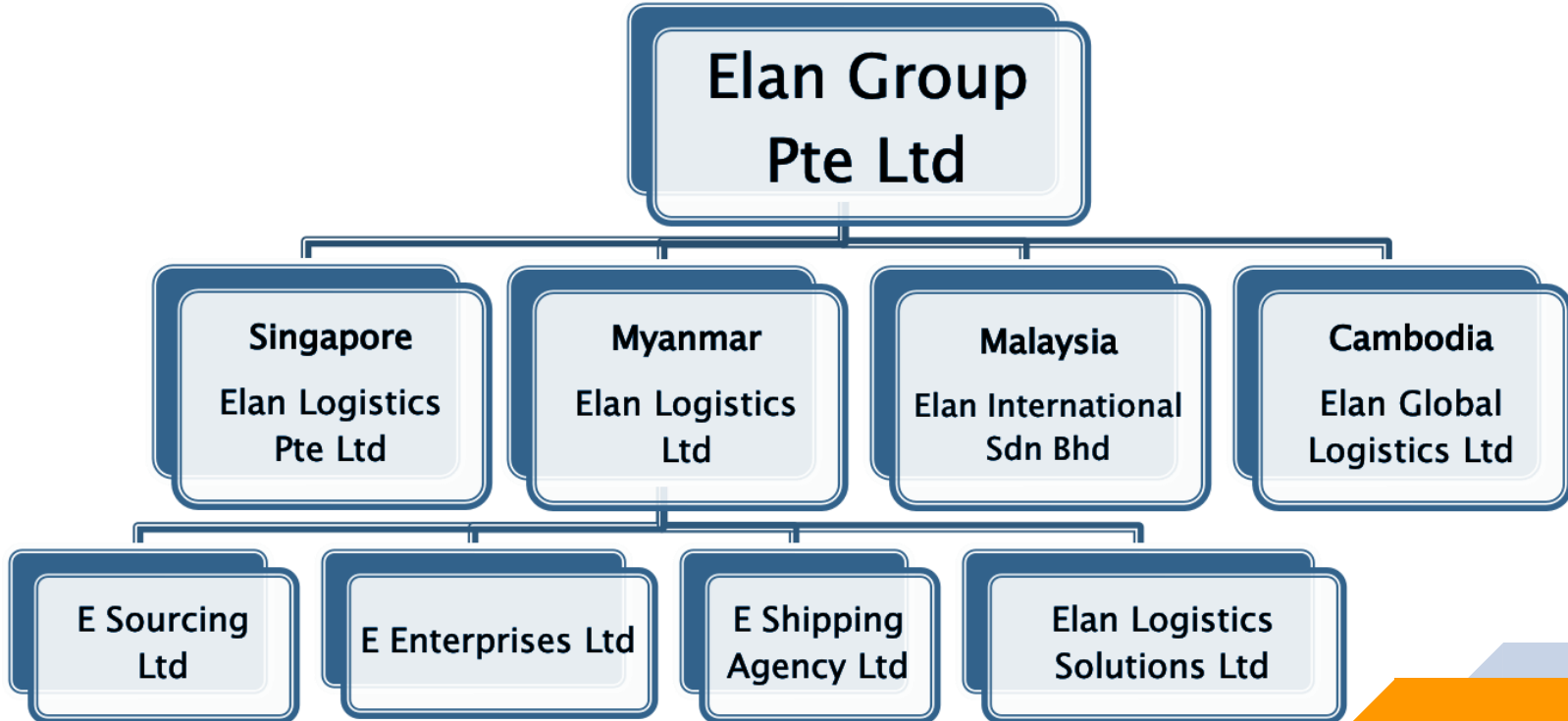
About Elan

Elan's Group Structure





ELAN'S GROUP STRUCTURE



3

About Elan

Our Dedicated Team



470 staff

Myanmar: 430

Singapore: 10

Cambodia: 10

Malaysia: 20

Our Dedicated Team



RAYMOND PHEE LUP OON
Managing Director
ELAN GROUP OF COMPANIES



JACQUELINE PHEE
Executive Director
ELAN GROUP OF COMPANIES



WIN THIDA
Financial Controller
ELAN GROUP OF COMPANIES



AUDREY SEAH
Director
ELAN LOGISTICS PTE LTD



ZAW MYO HTWE
Director
ELAN LOGISTICS LTD (MYANMAR)



YI YI CHO
Director
ELAN LOGISTICS LTD (MYANMAR)



SHIRLENE LOW
Director
ELAN INTERNATIONAL SDN BHD



BONA NGOV
Director
ELAN GLOBAL LOGISTICS LTD



JEFFERY JUBRIN
Director
ELAN LOGISTICS LTD (MYANMAR)



SAN SAN HLAING
Snr Admin & HR Manager
ELAN LOGISTICS LTD (MYANMAR)



THAN THAN AYE
General Manager (Agency)
ELAN LOGISTICS SOLUTIONS LTD (MYA)



NU YIN WIN
General Manager (Freight Forwarding)
ELAN LOGISTICS LTD (MYANMAR)



THAE NU NU SAN
General Manager (Agency)
GLOBAL CONSOLIDATORS LTD (MYA)



EVE WEE
Finance Manager
ELAN LOGISTICS PTE LTD



LYNN LYNN TUN
General Manager (Agency)
ELAN LOGISTICS SOLUTIONS LTD (MYA)



KAYTHI
General Manager (Customer Service)
ELAN LOGISTICS LTD (MYANMAR)



4

About Elan

Our Business Strategy



OUR 6 PRONG APPROACH

Our Business Strategy tailored to customer needs.



