



ANNUAL ASSEMBLY

17-19 MARCH 2019

DUBAI



CARGO
Connections

Welcome Letter.....	2
Agenda.....	3
Welcome Reception & Gala Dinner.....	4
Daytime Refreshments.....	4
1-2-1 Meetings.....	4
Meeting Room.....	4
Business Lunch.....	4
Fight To Battle Plastic Pollution.....	5
Meeting Gifts.....	5
Dress Code & Weather.....	5
Special Guest: Wisetech Global.....	5
Dhow Dinner Cruise.....	5
Delegate List.....	6
Membership List.....	9
Fundraising Foundation.....	10
5th Annual Assembly: Thailand.....	11



WELCOME LETTER

Welcome to Dubai and our 4th Annual Assembly.

We are delighted with the 70% increase in attendance this year, showing that Cargo Connections is becoming firmly established. We know that there are hundreds of general cargo networks in the industry today and we are delighted that you chose to join us. When we began in 2014, we set ourselves long term goals of creating a world class organisation (and not to open the door to anyone that applied) and we are now seeing the benefits of this policy.

As well as gaining new business contacts, friends and business, we have a fantastic few days ahead of us. We hope you will enjoy our Gala Dinner entertainment on Sunday evening, a fantastic party band called "New Rules" who will help us dance off the calories with a string of hits from the 60's right up to today. See you on the dance floor!

After a busy day in the meeting room, on Monday evening we will meet in the Hotel Reception at 19:30 for a 2-minute walk to the Al Mansour Dhow (originally used as a cargo vessel!). We will enjoy a dinner cruise along the tranquil waters of Deira Creek with a sumptuous buffet of Arabic and international fare prepared by 5-star chefs while an Arabic singer will perform traditional songs.

Finally, please keep this Meeting Brochure as the photos from page 6 onwards will help jog your memory in the coming months. 😊

Rachel Humphrey FCILT
President/C.E.O.



AGENDA

SCHEDULE OF EVENTS

Sunday 17 March 2019

- 19:00 - 20:00 Reception & Awards
- 20:00 - 22:00 Gala Dinner & Music

Monday 18 March 2019

- 09:30 - 09:45 Opening Session
- 09:45 - 10:00 WiseTech
- 10:00 - 10:20 Group Photograph
- 10:20 - 10:40 1-2-1 Meeting. Session 1
- 10:40 - 11:00 1-2-1 Meeting. Session 2
- 11:00 - 11:30 Coffee Break
- 11:30 - 11:50 1-2-1 Meeting. Session 3
- 11:50 - 12:10 1-2-1 Meeting. Session 4
- 12:10 - 12:30 1-2-1 Meeting. Session 5
- 12:30 - 14:00 Lunch Break
- 14:00 - 14:20 1-2-1 Meeting. Session 6
- 14:20 - 14:40 1-2-1 Meeting. Session 7
- 14:40 - 15:00 1-2-1 Meeting. Session 8
- 15:00 - 15:20 1-2-1 Meeting. Session 9
- 15:20 - 15:50 Coffee Break
- 15:50 - 16:10 1-2-1 Meeting. Session 10
- 16:10 - 16:30 1-2-1 Meeting. Session 11
- 16:30 - 16:50 1-2-1 Meeting. Session 12
- 19:30 - 22:00 Dhow Dinner Cruise

Tuesday 19 March 2019

- 09:30 - 09:40 Opening Session
- 09:40 - 10:00 1-2-1 Meeting. Session 13
- 10:00 - 10:20 1-2-1 Meeting. Session 14
- 10:20 - 10:40 1-2-1 Meeting. Session 15
- 10:40 - 11:10 Coffee Break
- 11:10 - 11:30 1-2-1 Meeting. Session 16
- 11:30 - 11:50 1-2-1 Meeting. Session 17
- 11:50 - 12:10 1-2-1 Meeting. Session 18
- 12:10 - 12:30 1-2-1 Meeting. Session 19
- 12:30 - 14:00 Lunch Break
- 14:00 - 14:20 1-2-1 Meeting. Session 20
- 14:20 - 14:40 1-2-1 Meeting. Session 21
- 14:40 - 15:00 1-2-1 Meeting. Session 22
- 15:00 - 15:20 1-2-1 Meeting. Session 23
- 15:20 - 15:50 Coffee Break
- 15:50 - 16:10 1-2-1 Meeting. Session 24
- 16:10 - 16:30 1-2-1 Meeting. Session 25
- 16:30 - 16:50 1-2-1 Meeting. Session 26



WELCOME RECEPTION & GALA DINNER

At 19:00 on Sunday, we will gather to collect name badges, meet fellow delegates and enjoy a Welcome Reception at the Pool Deck (on the 1st Floor) with stunning views of the Creek and City Skyline. Our Award Ceremony will be held and then we will take a 2-minute walk and elevator ride to the Plaza Ballroom on the 20th Floor for an elegant Gala Banquet. A fantastic party band called "New Rules" will help us dance off the calories with a string of hits from the 60's right up to today.



1-2-1 MEETINGS

Your name badge lanyard contains your schedule and each meeting is assigned a table number so that the changeover runs smoothly. The Cargo Connections Countdown Clock will help you manage your time during the 1-2-1 meetings and to give you a 2 minute warning to end your meeting, you will hear 8 short beeps. A continuous alarm will sound when the session is over and you will then see a changeover timer, to allow you to get to your next table. These crucial sessions allow you to introduce your company, highlight specialist areas, discuss cross trade and potential collaborations as well as providing information regarding your country's regulations and requirements.

DAYTIME REFRESHMENTS

As well as our official Coffee Breaks, which include delicious snacks, we have also arranged for fresh coffee and a selection of tea to be available throughout the day.



MEETING ROOM

Our meeting will be held in the Grand Zabeel Ballroom, on the Ground Floor. Only fully paid registered delegates with conference lanyards are permitted to enter the meeting room. Delegates must be fully employed by a CC Member either on a full or part-time basis and not employed by any other company. Breach of this condition will result in the immediate cancellation of attendance with no refund. The doors will open at 09:00 for a prompt 09:30 start. Please be at the Meeting Room at the requested time to avoid disruption and late starts. We have supplied long tables at the entrance of the meeting room for you to place your company brochures and gifts to your fellow Members.



BUSINESS LUNCH (DELEGATES ONLY)

An international buffet lunch, with soft beverages, will be available on Monday and Tuesday, from 12:30-14:00, at the Al Khor on the 20th Floor. Please note that if your spouse intends to join you for lunch, please arrange with the hotel directly in order to avoid any confusion or embarrassment.



FIGHT TO BATTLE PLASTIC POLLUTION

Most events use 100s of single-use plastic water bottles over their duration, which can take between 400 and 1,000 years to decompose. From harming marine life to littering beaches and congesting landfills, the disturbing growth of plastics is threatening our world. To help battle plastic pollution, Cargo Connections is providing delegates with BPA free reusable aluminium bottles and the hotel is supplying pitchers of filtered water in the conference room.

MEETING GIFTS

On Monday morning, each delegate will receive a Conference Bag making it easier to carry items between your 1-2-1 meetings. After the meeting, you will receive a link address so that you can download 100's of photos from our Gala Dinner and Conference Room, as well as our Official Group Photo. Finally, a small gift from the Cargo Connections Head Office - a pop socket! This is a very useful grip that you stick to the back of your smartphone, reducing the risk of the dreaded screen smash. It is also a stand and an earbud holder - we love them at the CC Head Office!



DRESS CODE & WEATHER

For the Gala Dinner, we advise smart casual attire. We recommend a business suit for the start of our meeting as our Official Group Photo will be taken at 10:00. Thereafter, the meeting attire is business casual (no ties needed!). The average high temperature in Dubai during March is 28°C, which drops to 17°C at night. Sea temperatures are around 22°C, while humidity's moderate and typical rainfall's 24mm over four rainy days. There'll be lots of sun, and you can expect 12 hours of daylight with eight hours of sunshine each day.



DHOW DINNER CRUISE

We will meet in the Hotel Reception at 19:30 on Monday for a 2 minute walk to the Al Mansour Dhow. We will then enjoy a dinner cruise along the tranquil waters of Deira Creek with a sumptuous buffet of Arabic and international fare prepared by 5-star chefs. Along with a welcome drink on arrival, the house beer, house red wine, house white wine, soft drinks, mineral water and fresh juices are included. An Arabic singer will perform traditional songs, creating a lively atmosphere. Originally used as a cargo vessel, the wooden Al Mansour Dhow was beautifully handcrafted. It now offers stunning views of Dubai cityscape, including the Burj Khalifa, the tallest building in the world. The Dhow features an air-conditioned lower deck and open upper deck.



SPECIAL GUEST: WISETECH GLOBAL

We welcome Keith Plummer and Rosin George of WiseTech as our Guest Speakers. We recently formed an exclusive partnership with WiseTech Global, the technology company behind CargoWise One. Our partnership opens a range of CargoWise One benefits and discounts for Cargo Connections Members. Jennifer Killian, GM of Channels at WiseTech Global says "It's with great pleasure that we welcome Cargo Connections as a WiseIndustry Partner. The strength and flexibility of CargoWise One will enable Cargo Connections Members to move to the next level of operational productivity and customer service." CargoWise One is fast becoming the industry standard solution for logistics professionals, so this is great news for Members and our network as a whole.

DELEGATE LIST

CORRECT AS OF 03/03/19



Daniel Coringrato
Delfino Global
ARGENTINA



Alan Gesmundo
Outside The Box Logistics
AUSTRALIA



Robert Mrencevski
Spark Global Logistics
AUSTRALIA



Wolfgang Vytisk
ALLSTA Express
AUSTRIA



Taslim U. Khondoker
Asia Star Logistics
BANGLADESH



Md. Moklachor Rahaman
ZOOM Logistics
BANGLADESH



Emile Vanderbist
Multiple Cargo Consult
BELGIUM



Steven Strukeli
Spark Global Logistics
BELGIUM



Billy Lu
Imex Shipping
CHINA



Frank Li
Imex Shipping
CHINA



Calvin Zeng
Ningbo Star Alliance
CHINA



Andy Shi
Ningbo Star Alliance
CHINA



William Zhang
Perfect Logistics
CHINA



Jason Yu
Shanghai Multiplex
CHINA



Neon Tu
Shenzhen FengDa
CHINA



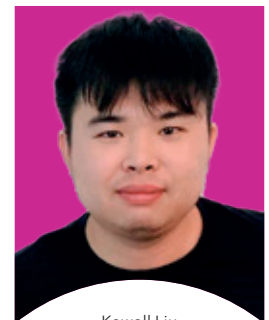
Amanda Guo
Shenzhen FengDa
CHINA



Kyle Li
Shenzhen FengDa
CHINA



Tyler Song
Shenzhen Grand
CHINA



Kewell Liu
Shenzhen Uni-Home
CHINA



Shirley Chou
Wirtz Link Service
CHINA



Sanja Lasic
Express d.o.o.
CROATIA**



Farouk Gomati
Interworld Freight
DOM REP/GUATEMALA/USA



Khaled Sabry
First Global Logistics
EGYPT



Delphine Hautbergue
Atlantide Logistics
FRANCE

**SERBIA/SLOVENIA



Hermann Buenning
ALLSTA Spedition
GERMANY



Lev Henzel
Sea Master Shipping
GERMANY



Emmanuel Percy-Brown
Total Logistics
GHANA



Victor Owusu
Total Logistics
GHANA



Corey Cheung
Worldtrans Logistics Services
HONG KONG



Terrill Cheung
Worldtrans Logistics Services
HONG KONG



Wilfred Menezes
Athena Global
INDIA



Arun Kumar
InSynergy Supply Chain
INDIA



Siddharth Dave
FreightBridge Logistics
INDIA



Nimesh Rajgor
FreightBridge Logistics
INDIA



Ravi Kumar Patel
NVS Shipping Services
INDIA



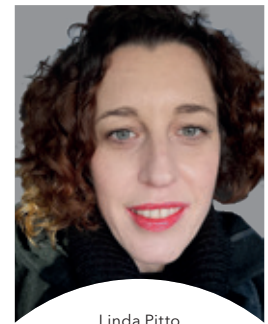
Santosh Kumar Prakhya
NVS Shipping Services
INDIA



Shailesh Karmakar
Sai Seair Logistics
INDIA



Tom Thornton
Wells Cargo Logistics
IRELAND



Linda Pitto
BASE S.P.A.
ITALY



Marco Ghezzi
New CargoJet
ITALY



Vittorio Romano
Thruex SRL
ITALY



Francesca Lannunziata
Thruex SRL
ITALY



Nicodemus Kilonzo
Transmeridian Int
KENYA



Sally Araki
TransMED Logistics
LEBANON



Puvaneish Paphitis
Kagayaku Logistics
MALAYSIA



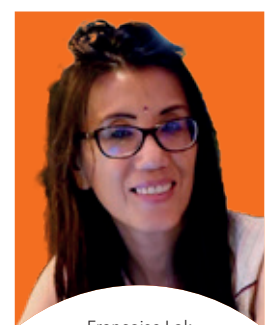
Ken Ong
Linker Logistics
MALAYSIA



Alejandro Lasheras
Kronoz Internacional
MEXICO



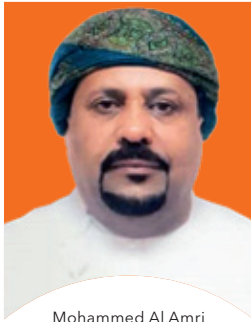
Matthijs de Rijke
Inco Express
NETHERLANDS



Francoise Lok
Afriglobal Logistics
NIGERIA



Nureni Awayewaserere
United Redox
NIGERIA



Mohammed Al Amri
Al Amri Shipping & Logistics LLC
OMAN



Manodh K. Nair
Al Amri Shipping & Logistics LLC
OMAN



Zohaib Noor
International Cargo Management
PAKISTAN



Adrian Radulescu
ADD Cargo Solutions
ROMANIA



Vilayil R. Nair Babu
Orbit Freight Logistics
SAUDI ARABIA



Rephik Sherafudeen
Orbit Freight Logistics
SAUDI ARABIA



Mladen Djuric
Express d.o.o.
SERBIA**



Mayuri Gupta
Athena Global
SINGAPORE



Jag Jivan Singh
JS World Freight
SINGAPORE



Esther Kanono
Forte-Link Logistics
SOUTH AFRICA



Toler Wolfe Coote
Fox Mallard Freight
SOUTH AFRICA



Kenneth Kim
Esprit Logistics
SOUTH KOREA



Shane Yoon
Esprit Logistics
SOUTH KOREA



Juan Kim
New World Shipping
SOUTH KOREA



Gelsomina Kwon
New World Shipping
SOUTH KOREA



Santiago Fernandez
Milestone Logistics
SPAIN



Priyantha Rupasinghe
Prestige International
SRI LANKA



Varuna Jayasinghe
Prestige International
SRI LANKA



Gino Mazzoni
Total Freight
SWITZERLAND



Halil Ozturk
Mark Global Lojistik
TURKEY



Ozgur Deniz
Mark Global Lojistik
TURKEY



Jayasuresh Sundaram
Aura Freight
UAE



Ashiba Kayees Ayoob
Aura Freight
UAE



Dr. Azgarkhil Mangal
ILS International
UAE

****CROATIA/SLOVENIA**

MEMBERSHIP LIST

Our membership is growing steadily and currently comprises of 114 companies in 58 countries.

Representatives are selected due to their excellent reputations within the industry, accreditations by international authorities and have passed a strict entry procedure.



Wali Jan
ILS International
UAE



TBA
STI Middle East
UAE



Abdul Razak Aga
UAE
WIDE WING SHIPPING



Rosin George
CC Guest WiseTech
UNITED KINGDOM



Keith Plummer
CC Guest WiseTech
UNITED KINGDOM



Mark Reid
Connaught Air Services
UNITED KINGDOM



Fadi-Jean Zakka
AIRSCHOTT / SEASCHOTT
UNITED STATES



Peter Linh
Crown Logistics
VIETNAM



Andy Chinh
New World Logistics
VIETNAM



Brian Mafarachisi
Customs Services
ZIMBABWE

ARGENTINA: Delfino Global
Talwan Transport Service

AUSTRALIA: Outside The Box Logistics
Sadleirs Global Logistics
Spark Global Logistics

AUSTRIA: Air Sea Land (ASL)
ALLSTA Express Spedition

BANGLADESH: Asia Star Logistics
Lead Logistics
ZOOM Logistics

BELGIUM: Multiple Cargo Consult
Spark Global Logistics

BULGARIA: Etna Cargo Transport

CANADA: Safesea Shipping Group
Tri-Alliance Freight Services

CHINA: Imex Shipping
Ningbo Star Alliance Intl
Perfect Logistics
Shanghai Multiplex Concept
Shanghai Worldtrans Logistics
Shenzhen FengDa Logistics
Shenzhen Grand Translink
Shenzhen Uni-Home Intl
Westbound Logistics Svc
Wirtz Link Service

CROATIA: Express d.o.o.

CZECH REP: Air Sea Land (ASL)
ZOOM Cargo

DOM REP: Interworld Freight

EGYPT: First Global Logistics
On Time Shipping

ETHIOPIA: Emal Trading And Logistics

FRANCE: Actitrans
Atlantide Logistics France
FIT

GERMANY: ALLSTA Spedition
Sea Master Shipping

GHANA: Total Logistics

GREECE: Synergy In Supply Chain

GUATEMALA: Interworld Freight

HONG KONG: Calpac Logistics
Worldtrans Logistics Svc

HUNGARY: Air Sea Land (ASL)

INDIA: Athena Global Logistics
FreightBridge Logistics
Global Cargo Logistix
InSynergy Supply Chain Sol
NVS Shipping Services
Sai Seair Logistics
V-Care Logistics Services

INDONESIA: PT Sarana Pandawa Logistik

IRELAND: Wells Gargo Logistics

ITALY: BASE
New CargoJet
Thruex

KENYA: Transmeridian Intl Logistics

KUWAIT: Bukhamseen Cargo

LEBANON: TransMed Logistics

MALAYSIA: Kagayaku Logistics
KC Forwarding
Linker Logistics

MALDIVES: Asia Forwarding

MALTA: O&S Shipping

MEXICO: Kronoz Internacional

NETHERLANDS: Inco Express
TIS Logic

NEW ZEALAND: Nautica Shipping & Logistics

NIGERIA: Afriglobal Logistics
Airwater Cargo Services
United Redox Global Links

OMAN: Al Amri Shipping & Logistics
Al Badri Logistics Services
Star Line Shipping & Logistics

PAKISTAN: Intl Cargo Management

PANAMA: LM Freight Forwarders

PHILIPPINES: Globalistics Freight Services

POLAND: Delphia

ROMANIA: ADD Cargo Solutions

SAUDI ARABIA: Golden Port
Orbit Freight Logistics (OFL)

SERBIA: Express SEE d.o.o.

SINGAPORE: Athena Global Logistics
FTL Group
JS World Freight Distributor

SLOVENIA: Air Sea Land (ASL)
Express d.o.o.

SOUTH AFRICA: Forte-Link Logistics
Fox Mallard Freight

SOUTH KOREA: Esprit Logistics
New World Shipping

SPAIN: Milestone Logistics

SRI LANKA: Prestige International

SWITZERLAND: Total Freight Management

TANZANIA: CMTL Group

THAILAND: WL (Thailand) Ltd

TURKEY: Headway Global
Mark Global Lojistik
Okura Intl Transportation
Solibra Lojistik

UAE: Aura FT Shipping
ILS
STI Middle East
Wide Wing Shipping

UK: Connaught Air Services
Indy
Ward Global Logistics

USA: AIRSCHOTT / SEASCHOTT
Alba Wheels Up Inc.
Comage Container Lines
Interworld Freight

VENEZUELA: LM Freight Forwarders

VIETNAM: Crown Logistics
New World Logistics

ZIMBABWE: Customs Services

FUNDRAISING

THE CARGO CONNECTIONS FUNDRAISING FOUNDATION HAS RAISED OVER **\$10,000** FOR THE FOLLOWING CHARITIES AND PROJECTS.

2019: GLOBAL FOOTPRINT NETWORK

We are pleased to be supporting the work of Global Footprint Network, an international research organization that envisions a future where all can thrive within the means of our one planet.

It's widely used Ecological Footprint accounts continue to be the only metric that compares overall human demand on nature with what our planet can renew. The distilled results: humanity is using over 1.7 Earths. In 2018, its "Earth Overshoot Day", the day each year when humanity has used more from Earth than the planet can renew in the entire year, fell on August 1. www.overshootday.org. Their campaign generated over 3 billion media impressions in over 100 countries, and was present on over 2800 websites.

See www.footprintnetwork.org

PREVIOUS YEARS

2018: LEAGUE OF DIATHLETES

£1000

The League of DiAthletes hosts "T1D Heroes" currently based across Australia, Brazil, Costa Rica, Ecuador, Ghana, Kuwait, Pakistan, Uganda, the UK and USA; who unite together developing grassroots type 1 diabetes educational workshops and activities.

2018: KLOKÁNEK HOUSE, PRAGUE

£1000

A converted former agricultural training centre, now 13 flats for 48 children, Klokánek (Kangaroo House) is a project of the Fund for Endangered Children. Offering temporary family care until the child can safely return home or enter permanent adoption.

2017: 2 SMALL BUSINESS PROJECTS, INDIA

£800

As well as helping hundreds of individuals living in poverty (mostly children) to access insulin and medical care, The Dream Trust also helps provide funding for small business start-ups so that their patients can become self-reliant and gain pride and dignity.

2016: RACHEL ABSEILS FOR INSULIN!

£4000

The Dream Trust provides life-saving insulin to poor children. It costs GB £200 to pay for the insulin that keeps a child alive for 1 year and Rachel, Jane and Tania are delighted to have already raised enough funds to fund 20 children.

2015: SOS CHILDREN'S VILLAGE BAMBOUS

£1500

SOS Children's Villages Mauritius is a leading child care Non-Governmental Organisation providing long-term care to needy children. Helping children who have lost parental care, who are at risk of abandonment or whose basic rights are not being fulfilled.

Our 5th Annual Assembly will take place from 8-10 March 2020 at the Outrigger Laguna Phuket Beach Resort, situated on Bangtao Beach between a tropical lagoon and the sparkling waters of the Andaman Sea - this beachfront property is designed to be a luxurious haven for our meeting.



5th ANNUAL ASSEMBLY

8-10 MARCH 2020

THAILAND



SUNDAY 8 MARCH

We have arranged a fantastic start to our event, which is a change from our usual schedule. We will all meet at 17:30 on Sunday 8 March for a coach trip to Siam Niramit to watch a world-class performance of Thailand's arts and cultural heritage. We will enjoy a fresh Thai and international buffet dinner and see many pre-show attractions such as traditional music and dancing performances, kick boxing show, grand parade with elephants and elephant rides. We will then settle into our upgraded Platinum Seats to be entertained by the spectacular show featuring over 100 performers, lavish costumes and stunning set designs. We will then depart back to the hotel at 22:00.



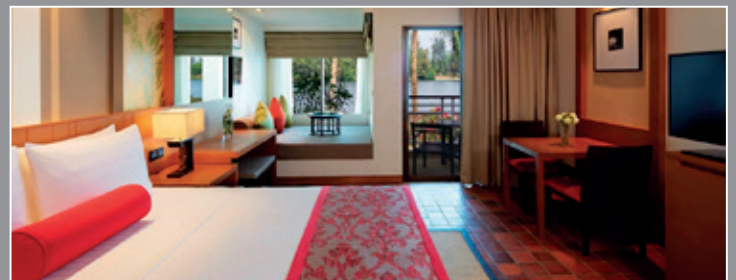
MONDAY 9 MARCH

Our meeting will take place in the grand Similan Ballroom and all delegates will gain access to our online Meeting Manager program so that 20-minute business meetings can be arranged prior to arrival. At 14:00 we will take part in a combination of team building activities and compete in friendly competition with fun being the main focus. After an entertaining afternoon, there will be time to rest before we meet at 19:00 for a drinks reception by the upper pool/Edgewater. We will then enjoy a dinner feast and be entertained by a Human Puppet, Thai Regional Dance Acts and a Bang Rachan Show. The evening will include soft drinks, fruit juices, beer, house wine, gin, rum, tequila, vodka, whisky and mixers.



TUESDAY 10 MARCH

Our official meeting will continue with 1-2-1 meetings where delegates highlight their specialist areas, discuss cross trade, existing and new business as well as information regarding their country's regulations and requirements. These crucial meetings also provide an opportunity to share key import and export trade information.



GUEST ROOMS

Lagoon View rooms (43m²) with sunken bathtub and showers are available to delegates at Single Lagoon View THB 6,700 (approx. USD 211) net per room per night; Twin/Double Lagoon View THB 7,200 (approx. USD 227) net per room per night. Room Rates include a full buffet breakfast and the 10% service charge, 7% VAT and 1% provincial tax (equal to 18.7%).

REFRESHMENTS

Morning coffee breaks include freshly-brewed coffee, a selection of regular and herbal teas and an assortment of croissants, sandwiches, Danish pastries and muffins. Afternoon coffee breaks include freshly-brewed coffee, a selection of regular and herbal teas, and an assortment of snacks including fruits, curry prawn fritters, deep-fried sesame chicken wings, and smoked salmon and cream cheese bagels. Lunch with soft beverages will be taken in Locavore restaurant.

WEATHER & DRESS CODE

The month of March is a great time to visit Phuket! Temperatures vary between 24°C - 33°C and rainfall is rare at this time of year with just 40mm falling throughout the month. For the Gala Dinner, we advise smart casual attire. We recommend a business suit for the start of our meeting as our Official Group Photo will be taken at 10:00. Thereafter, the meeting attire is business casual (no ties needed!). Phuket is among the world's finest beach destinations, with fine white sands, nodding palm trees, glittering seas and lively towns. Why not extend your stay and enjoy the island.



CARGO
Connections

HEAD OFFICE

Liss Business Centre,
Station Road, Liss,
Hampshire, GU33 7AW
United Kingdom

T: + 44 2392 425204

F: + 44 2392 356281

E: rachel@cargoconnections.net

W: www.cargoconnections.net

Global Cargo Connections Ltd trading as Cargo Connections
Registered in the UK, Company No 9127025
ISO 9001 Reg No 205364; ISO 14001 Reg No 205366