

# INSIDE Cargo Connections

ISSUE 23, MAY 2020

QUARTERLY NEWSLETTER FOR **CARGO CONNECTIONS**

**FOUR  
NEW MEMBERS  
THIS ISSUE**

**CIRCLE DRAGON  
EXPRESS:**  
TAIWAN

**ROYAL  
INTERNATIONAL:**  
EGYPT

**CS4 LOGISTICS:**  
GERMANY

**THE VISION  
SHIPPING:**  
UAE



**JOHN GOOD LOGISTICS  
SHOW THEIR EXPERIENCE  
IN HANDLING CANNING  
MACHINERY**

See page 4



**CARGO**  
Connections

Firstly, we hope you and your loved ones are safe and well at this difficult time. Our Administration Manager, Wendy Schuller manages our Reference Library and thought it might be useful for Members if she created a new page focussing on helpful online resources regarding the Coronavirus outbreak. I thought it was an excellent idea and Wendy has spent the past few days compiling a list of website links which you may find useful:

Coronavirus (COVID 19):  
List of Helpful Online Resources  
[www.cargoconnections.net/post/coronaviruslistofhelpfulonlineresources](http://www.cargoconnections.net/post/coronaviruslistofhelpfulonlineresources)



The page contains links to information that has the potential to impact ship operations; articles from an informal network of maritime and transportation lawyers; FIATA's resources related to the COVID-19 crisis; information on the specific areas concerning air cargo from IATA; Innovation 'crucial' for forwarders managing Covid-19 challenges; Coronavirus Effect On Supply Chains from JOC; 'Covid-19-watch' articles from Forwarder Magazine; The Effects of Coronavirus on International Shipping; Loss Prevention Measures for Cargo Storage and Transportation; Is your business secured ... Insured? by Prudence.

Remember, we also recently issued an **eZine: Coronavirus Special**, which covers tips for working from home, mental health and exercise.

As we all struggle with the impact of COVID-19, we must remember that belonging to an established network put you in the best position for when the outbreak dissipates. Belonging to organisations like Cargo Connections could be essential to the survival of many companies. Remember, after night comes day - it really is more important than ever to pull together.

Our next Zoom get together is on Tuesday 5 May 14:00 (London time) and we look forward to 'seeing you' all again then.

Thank you for your time and please stay safe.

RACHEL CRAWFORD  
President/C.E.O.



## FROM THE PRESIDENT/C.E.O.

### CARGO CONNECTIONS

Cargo Connections (CC) is an ISO 9001 and ISO 14001 certified organisation established in 2014 with the aim of becoming a leading international network of freight forwarders. Our Members offer clients the personal local service and flexibility that only privately-owned forwarders can, whilst benefiting from being part of a strong, established network. Our membership is growing steadily and currently comprises of 118 companies in 59 countries.

### INSIDE CARGO CONNECTIONS

PUBLISHER: Cargo Connections

CONTACT: [rachel@cargoconnections.net](mailto:rachel@cargoconnections.net)  
Tel: + 44 2392 425204

COVER: John Good Logistics Show their Experience in Handling Canning Machinery. See page 4.  
Photo: John Good Logistics

CC cannot take responsibility for the opinions, statements and/or facts expressed in the stories, that are contained in this publication. Any views expressed are those of the individual quoted, and not necessarily those of the publisher. The publisher can accept no responsibility for any errors or omissions made, but will endeavour to amend any, that are brought to our attention, in a future issue.



[www.cargoconnections.net](http://www.cargoconnections.net)

## CONTENTS

President of Airschott/Seaschott Speaks About Working Remotely .....	03	Novel coronavirus (COVID-19) outbreak .....	11
eLearning Platform: Train 2 Staff Members for Only £250 .....	03	Issue 2 of our eZine: Generation Gaps .....	11
CC Head Office issues Coronavirus Special eZine .....	03	A Solution-Oriented Approach at Circle Dragon Express .....	12
John Good Logistics Show their Experience in Handling Canning Machinery .....	04	Exhibition Collaborations Secured .....	13
A Proven Background at The Vision Shipping in the UAE .....	05	Annual Assembly Thailand .....	14
Man builds 2,500 square foot Dream Home out of 11 Shipping Containers .....	06		
Fundraising .....	08		
Integrated & Flexible Solutions from CS4 Logistics .....	09		
Royal International are Offering a 360° Service in Egypt .....	10		





# PRESIDENT OF AIRSCHOTT/SEASCHOTT SPEAKS ABOUT WORKING REMOTELY

Freight transportation and supply chains are recognised as being essential services, and the work being done by you all to support healthcare and essential supplies, society and the economy is vital.

So well done everyone, you are doing a great job!

Many of you are now working from home and we recently spoke with Bob Schott, President of Airschott/Seaschott (USA) about working remotely and he shared his experience with us:

"We've had a "work-from-home" model in place for over 10 years, both as a matter of convenience for some (started with the sales staff) and as a part of our "disaster plan". For about 8 years, about half of our staff work from home most of the time, with two team members living in Miami and Atlanta, cities far from our two base offices in the Baltimore - Washington area.



All team members have been equipped with tools to work from home. We provide company telephones for those that need them, and/or they have computer-based telephones.

When clients or carriers call the office, we switch the call to the home-worker seamlessly. Sometimes we hear a dog barking or child crying in the background but that's been a small price to pay for reducing the commuting traffic on the nation's roads. Imagine the value to the team member in eliminating hours of commute time each week.

In this lock-down/social distancing environment, it has been very easy for us to adapt. Our application software (CW1) provides management with tools to measure the efficiency and effectiveness of each team member - we track shipment processing times; any delayed shipments; revenue, profit, file count, etc.

We have two weekly staff meetings, one each for ocean and air, and in the past when some local work-from-homers came into the office on meeting day, we had a few that teleconferenced in. We have video screens in the meeting rooms but haven't employed those thus far - we expect that some work-from-homers may not be wearing "business attire" or, perhaps, any attire and we leave that to imagination."

It was great to hear from Bob and to hear about how Airschott/Seaschott use technology and how prepped the company is for all eventualities. Their approach not only considers and cares for the wellbeing of their staff, but also contributes to the protection of our environment.

Working closely together has never been more important we are proud of how connected our Members continue to be.

[www.airschott.com](http://www.airschott.com)

## eLEARNING PLATFORM: TRAIN 2 STAFF MEMBERS FOR ONLY £250

Our custom built eLearning Platform provides a comprehensive online 'Heavy Transport' training program which you can access at your own convenience, no need to leave the office, saving time travelling to workshops and seminars which can also be expensive.



The clear and highly effective training includes narration, graphs, diagrams, video footage and photos.

The training is ideal for staff who are at the beginning of their career but also offers senior level professionals a benefit from the practical, scenario and video based course as it will encourage reflection on current practices.

Our training program is provided at a heavily reduced cost but please remember we are offering a great deal until 30 June 2020:

**Buy 1 Get 1 Free!**

Enabling you to train 2 staff members for only £250!

Please visit the web site to enrol today.

[www.transporttraining.online](http://www.transporttraining.online)



## CC HEAD OFFICE ISSUES CORONAVIRUS SPECIAL eZINE

All over the world, people are finding themselves working from home as employers endeavour to limit staff exposure to the coronavirus outbreak.

Therefore, we thought we would issue a Coronavirus Special eZine, which covers tips for working from home, mental health and exercise.

Please feel free to issue our eZine via email to all your staff and we hope it provides some useful information and links during this challenging time.

All CC Head Office staff are working from home and are here to assist you during UK working hours. So, if you need anything please do not hesitate to email us and we will do our very best to support you.

Again, we are thinking of the health of our global family. Please take good care of yourselves and your families.

# JOHN GOOD LOGISTICS SHOW THEIR EXPERIENCE IN HANDLING CANNING MACHINERY

The project division of John Good Logistics (members in the UK) spend a lot of their time dealing with can making machinery and working with canning plants worldwide. January 2020 was no exception for them with their latest projects for canning facilities in both France and the UK.

Commercial Manager at John Good, Mark Reid explains: "We coordinated over 200 trailers internationally which included some heavy and cumbersome OOG cargo. We worked with our customer on all the pre-planning, inspections and loading of the trailers and ensured that all pieces arrived in order for a swift turn-around to complete the installation of the canning lines.

The largest piece of machinery we moved had a total measurement of 107.464cbm and consisted of a pin oven section. This part of the machine bakes the inside of each aluminium can and so is a crucial element of the can-line. With such large and heavy equipment, the planning and preparation for these precision moves was paramount."

Cheryl Sullivan, Export Manager for Projects, concludes: "Using our experience and knowledge we were able to ensure that both projects ran smoothly. Each can plant had strict installation deadlines to be met which took weeks of advanced transport planning as each piece of machinery had to be delivered on site by a stipulated schedule. There was no margin for any delays!"

[www.johngood.co.uk](http://www.johngood.co.uk)



6<sup>th</sup>
Pharma Supply Chain & Logistics Innovation Programme
PSIP

14 - 15 May 2020  
Courtyard By Marriott  
Basel, Switzerland

**Experience:**

- Our unique and inspiring program
- Countless networking opportunities.
- Remarkable one-to-one meeting sessions.
- The congenial gathering of distinguished industry leaders
- The beautiful, pristine paradise that is Basel, Switzerland

00 44 (0) 20 3129 8222 / 00 44 (0) 20 7691 7383 / info@worldbigroup.com

15<sup>th</sup> edition

**AICCS**  
All India Cold Chain Seminar

OF the industry!  
FOR the industry!  
BY the industry!

02-04 July 2020  
India Expo Mart, Greater Noida, Delhi-NCR  
[www.aiccs.in](http://www.aiccs.in)

Cold Storage | Refrigeration | Logistics

NEW LOCATION:  
Greater Noida, Greater Advantage  
We are coming to DELHI-NCR

Presented By  

FEDERATION OF COLD STORAGE ASSOCIATIONS OF INDIA

Event Managed By  

Reed Manch Exhibitions

CONTACT : Shradha Malik | +91 9810737270 | shradha.malik@reedmanch.com



**We are pleased to welcome The Vision Shipping LLC as new members in the UAE. Located in Dubai and over 10 years old, they offer a complete range of freight forwarding solutions by air, sea and land as well as many other related services, specialising in door-to-door delivery handling.**

CEO, Mr. Saqib Mehmood introduces the company: "The Vision Shipping LLC is a company providing comprehensive freight forwarding, shipping and logistics services. With a proven background, serving customers and partners worldwide, we believe in delivering the best services on time, responding quickly to requirements with prompt, effective solutions.

We offer transport solutions for all kinds of shipments including combined air, land and sea, containerised and breakbulk for both general and special cargo. We ensure the fastest and most reliable means of transportation at very

competitive rates. With qualified and experienced staff, we always try our best to achieve a high level of satisfaction from all our partners and customers using not only a modern scientific approach, but also with original ideas, passion and wisdom. We are closing more than 280 files per month, handling shipments from A to Z. A few examples of recent work we have handled include:

- Complete process for LG products - import & re-export
- Hisense TV export & transshipment from the UAE to Iraq
- Luxury boat shipments including

lashing, special approvals, shifting to port, diving and shipping to the Far East

- Complete process for cranes & beams shipments
- Auction cargo handling
- We were recently registered as a KIA and Hyundai agent in Dubai to handle their import & transshipments from Jebel Ali."

Some of the work handled by The Vision Shipping in the past few months can be viewed in these photos, with more in the online story.

**[www.thevisionshipping.com](http://www.thevisionshipping.com)**

**A PROVEN  
BACKGROUND  
AT THE VISION  
SHIPPING IN  
THE UAE**





# MAN BUILDS 2,500 SQUARE FOOT DREAM HOME OUT OF 11 SHIPPING CONTAINERS

Homes come in all shapes, sizes and these days with a variety of building materials to choose from. Shipping containers became a hit with the tiny house movement. Affordable, transportable and a DIY for those willing to do the research, planning and labor - perhaps with a little help from friends. Container homes evolved quickly into bigger homes, using several containers.

Will Breaux went all the way with his dream home, designing and building a spacious 2,500 square foot, three story home using 11 containers. Since early the 2000s, he struggled to find a designer to create his dream home the way he wanted it and in the end decided to do it himself.

"I began looking at projects that were being built that I liked. Ultimately, a designer with a home builder family was hired to design a 3 story townhouse to be built on the lot," Will wrote on his blog. "After going round and round for months, I eventually had to fire that group because they weren't willing to give me what I wanted. Thus, the journey to design my own house began around 2011."

Will wanted a home build with shipping containers long

before it became a trend. "Shipping containers are strong, fireproof, long-lasting, hurricane resistant, and have common characteristics," he explained.

Will did his due diligence, spending hours learning about constructing houses and eventually created a 3D sketch of the house he wanted and then, step by step, he literally build the dream home he imagined.

Will's not quite done yet and writes: "One day I will finish it and it will stand on its own as a design and build. Until that time, it is and will continue to be a WORK IN PROGRESS. I have commented myself that it is likely to get more crazy looking before it ever becomes more normal."

[bionicweapon.wordpress.com](http://bionicweapon.wordpress.com)







# HOMEDelivery

WORLD 2020

THE EVENT FOR RETAIL LOGISTICS

JUNE 3 - 4

PENNSYLVANIA CONVENTION CENTER,  
PHILADELPHIA

10<sup>th</sup> ANNIVERSARY EDITION | INDIA WAREHOUSING SHOW 2020

Most important marketplace for logistics professionals in Asia

18-19-20 JUNE 2020 | Pragati Maidan, New Delhi

A global event on warehousing, material handling, storage, Logistics & Supply Chain

www.IndiaWarehousingShow.com

Reed Manich Exhibitions

For Bookings contact: Janish Jafri | M: +91 99996 86007 | E: janish.jafri@reedmanich.com

## Future Warehouse & Logistics 2020

Creating a Synergy between People, Process and Innovation for a SMARTER Operating Facility

Dubai, UAE | 29th September – 1st October 2020

Featuring a Post-Conference Workshop on  
**Digital Supply Chain: The Route to an Effective Warehouse Management**

Facilitated by an International Expert:  
**Ian Maughan** Managing Director  
Supply Chain Network Ltd, UK

Featuring a Site Tour  
Exclusive Site Tour to a State-of-the-Art Warehouse hosted by Unilever

Endorsers

Media Partners

For more information and registration, please contact **Anna Foo** at [AnnaKo@marcusevanski.com](mailto:AnnaKo@marcusevanski.com)

marcusevans

ONE INDUSTRY, ONE SHOW!

SINO CORRUGATED | INDIA CORR EXPO | SINO FOLDING CARTON | INDIA FOLDING CARTON

30 SEP - 2 OCT 2020  
BOMBAY EXHIBITION CENTRE  
NESCO, GOREGAON (E), MUMBAI

India's most trusted event on Corrugated Packaging & Folding Carton Industry

www.IndiaCorrExpo.com | www.IndiaFoldingCarton.com

Event Highlights 2020

- 270+ EXHIBITORS
- 90+ INTERNATIONAL COMPANIES
- 8000+ UNIQUE VISITORS
- 13,000 SQM EXHIBITION SPACE

FOR DETAILS:

Shradha Malik  
+91 9810737270  
[shradha.malik@reedmanich.com](mailto:shradha.malik@reedmanich.com)

Vaishali Arya  
+91 9911335153  
[vaishali.arya@reedmanich.com](mailto:vaishali.arya@reedmanich.com)

In Partnership with: ICCMA

Co-located Events: ICCMA CONGRESS 2020

Co-organiser: Reed Exhibitions

Organiser: Reed Manich Exhibitions



# FUNDRAISING

THE CARGO CONNECTIONS FUNDRAISING FOUNDATION HAS RAISED OVER **\$10,000** FOR THE FOLLOWING CHARITIES AND PROJECTS .

## 2019: GLOBAL FOOTPRINT NETWORK

We are pleased to be supporting the work of Global Footprint Network, an international research organization that envisions a future where all can thrive within the means of our one planet .

It's widely used Ecological Footprint accounts continue to be the only metric that compares overall human demand on nature with what our planet can renew. The distilled results: humanity is using over 1.7 Earths . In 2018, its "Earth Overshoot Day", the day each year when humanity has used more from Earth than the planet can renew in the entire year, fell on August 1.

[www.overshootday.org](http://www.overshootday.org) . Their campaign generated over 3 billion media impressions in over 100 countries, and was present on over 2800 websites .

See [www.footprintnetwork.org](http://www.footprintnetwork.org)

## PREVIOUS YEARS

### 2018: LEAGUE OF DIATHLETES

**£1000**

The League of DiAthletes hosts "T1D Heroes" currently based across Australia, Brazil, Costa Rica, Ecuador, Ghana, Kuwait, Pakistan, Uganda, the UK and USA; who unite together developing grassroots type 1 diabetes educational workshops and activities .

### 2018: KLOKÁNEK HOUSE, PRAGUE

**£1000**

A converted former agricultural training centre, now 13 flats for 48 children, Klokánek (Kangaroo House) is a project of the Fund for Endangered Children . Offering temporary family care until the child can safely return home or enter permanent adoption.

### 2017: 2 SMALL BUSINESS PROJECTS, INDIA

**£800**

As well as helping hundreds of individuals living in poverty (mostly children) to access insulin and medical care, The Dream Trust also helps provide funding for small business start-ups so that their patients can become self-reliant and gain pride and dignity.

### 2016: RACHEL ABSEILS FOR INSULIN!

**£4000**

The Dream Trust provides life-saving insulin to poor children . It costs GB £200 to pay for the insulin that keeps a child alive for 1 year and Rachel, Jane and Tania are delighted to have already raised enough funds to fund 20 children .

### 2015: SOS CHILDREN'S VILLAGE BAMBOUS

**£1500**

SOS Children's Villages Mauritius is a leading child care Non-Governmental Organisation providing long-term care to needy children . Helping children who have lost parental care, who are at risk of abandonment or whose basic rights are not being fulfilled .



**We are pleased to report CS4 Logistics GmbH are new members in Germany. With offices in Hamburg and Frankfurt, the company offer a complete range of freight forwarding services. They are registered with IATA and the German and Hamburg freight forwarders associations and certified with ISO 9001 and AEO.**

Tobias Redweik (Vice President of Sales & Marketing) has confirmed his attendance at the 2020 Annual Assembly taking place in Thailand on 27-29 November. Please visit the web site to book your place for a great opportunity to meet with all Cargo Connections agents. Tobias says they are becoming members because: "...we believe that the personal exchange within our industry is key to continual improvement and we learn something new at every networking event we attend."

Tobias introduces the company: "CS4 Logistics is a

medium-sized, family business, completely independent of external capital investors. This independence combined with flexibility, reliability and proximity to the customer are the four key components of the CS4 Logistics philosophy. They enable us to serve our customers and partners in the long-term with a high level of individuality. With highly-skilled and motivated teams and innovative services, CS4 Logistics provides integrated and flexible logistics solutions, from calculation to transport, that address the unique and diverse needs of the market. We are specialised in airfreight, seafreight and project logistics, with a strong affinity to all time sensitive and fragile shipments, and also offering rail & road transport, RORO, breakbulk, chartering, customs brokerage and end-to-end supply chain management. These logistics solutions are safely delivered for many major industries, including high-tech, retail, fast-moving consumer goods, fine art, pharmaceutical & healthcare, industrial,

chemical, aviation and automotive."

"Intercontinental logistics requirements are getting more complex day by day and as a medium-sized business, CS4 Logistics pursues a special goal. We do not want to be the biggest, but we do want to be the most innovative!"

CS4 Logistics have a dedicated department for fine art, named CS4art. They recently handled a large high-value art project as photographed and explained by Tobias: "If you are interested in fine art logistics, you will encounter enormous figures, day-to-day. Last year, CS4art handled valuable art objects totalling €600m in just 10 days. This is the insurance and customs value of the artworks travelling for just one dedicated project.

More than 70 US museums were lending pieces to a big exhibition on American art in Germany and of these, 48 of them also sent freight attendants with the precious cargo. CS4art supervised all

inbound flights to FRA and LGG, organised transit customs under-bond to the final destination in central Germany and provided the overall logistics of the project including the organisation of art handler teams, unpacking and installing the exhibition. Once the exhibition was finished, we commended with the return of the art, booking 68 AWB's and supervising a total of 32 shipments on various outbound flights from FRA, LGG and LUX to US destinations."

"Working in the field of fine art logistics really means going the very last mile for the customer. It requires a sound knowledge about the nature of the artwork, possible packing methods & materials, crate design, routings and customs procedures. If you are interested in learning more about this niche market, talk to us!"

[www.cs4.de](http://www.cs4.de),  
[www.cs4art.de](http://www.cs4art.de)



## INTEGRATED & FLEXIBLE SOLUTIONS FROM CS4 LOGISTICS







## ROYAL INTERNATIONAL ARE OFFERING A 360° SERVICE IN EGYPT

We are pleased to announce Royal International Cargo and Logistics as new members in Egypt. The company offer a complete range of freight forwarding services by air, sea and land as well as customs clearance, breakbulk and project logistics, covering all major airports and ports in Egypt. They were recommended to Cargo Connections by current members.

Elhoussieny Abdulhameed (CEO) says: "At Royal International, we understand the necessity of smooth freight forwarding and clearing services. We also understand local rules and regulations and the challenges of global business and we use this knowledge to offer a variety of tailored and individual solutions while keeping costs to a minimum."

"Our experienced and dedicated team, adept in international freight forwarding procedures, offer a 360° service - from documentation to firm delivery commitments, be it import or export, we ensure attention to detail in every shipment."

Photos of the Royal International Cargo and Logistics offices can be viewed above.

[www.royalintcargo.com](http://www.royalintcargo.com)





# NOVEL CORONAVIRUS (COVID-19) OUTBREAK

We are facing challenging times as we all prepare and respond to the novel coronavirus (COVID-19) outbreak.

I am sure none of us are escaping the fast evolving news and we watch with concern at the rising numbers of those infected by the virus. We hope for a quick and full recovery for all those affected. We are also incredibly grateful to the healthcare workers that are under such strain all over the world.

With such unknowns, the economic implications are also a concern. However, as companies, we have weathered many storms over the years. Whatever happens, we have a strong progressive membership and I have no doubt that we will emerge more resilient than before.

For now, we are thinking of the health of our global family.

Please take good care of yourselves and your families.

**Rachel Crawford and all at the CC Head Office**



## ISSUE 2 OF OUR eZINE: GENERATION GAPS

We are delighted to issue our second eZine, which is called Generation Gaps consisting of helpful information and links.

We are constantly looking at ways to improve experiences within our network and as such we recognise the significant importance that learning holds.

For us, training is just one element on our learning compass and we are always looking at ways to enhance this section of our membership, to benefit our network not only now - but by building resilience for the future.

Our first issue was International Cultural Body Language and we hope you find both useful.

Upcoming topics will include:

- Presentation and Communication Skills
- Workplace and People Productivity

Please feel free to print both issues of our eZines and display them on your staff noticeboard, you can also email around your office to ensure it reaches all your staff.

**We welcome any feedback.**

## 27TH MARITIME HR & CREW MANAGEMENT

21st-22nd October 2020 London, UK

Promoting Competent, Efficient and Attractive Crews by Improving Recruitment, Management and Training Solutions

**15% Discount Available for All Subscribers Until 30th September, 2020**

**For More Info & Registration, Contact:**

**Mohammad Ahsan**  
+44 (0) 203 141 0606  
mahsan@acieu.net

ACI

## Future Warehouse 2020

Leveraging Supply Chain 4.0, Operational Excellence and Workforce Optimisation for the Efficient, Profitable and Digital Warehouse of the Future

Melbourne, Australia | 25th – 27th May 2020

**Exclusive Site Tour**  
Join Our Behind the Scenes Site Tour to a Multinational Organisation and Obtain Key Takeaways to Drive Warehouse Innovation and Efficiency  
Hosted By:  
Unilever, Tullamarine

**Featuring an Interactive Half-Day Workshop**  
Automation and Supply Chain 4.0 Driven Strategies for Warehouses of the Future  
Jon Northorpe Managing Director  
tgroup.co

**Endorser:** UFO FREIGHT

**Media Partners:** freightbook, PROJECT CARGO NETWORK, CARGO Connections, PROJECT CARGO Weekly

**SPECIALIST FREIGHT NETWORKS:** WORLD FREIGHT NETWORK, INTERNATIONAL FREIGHT NETWORK, SUPPLYCHAINBRAIN

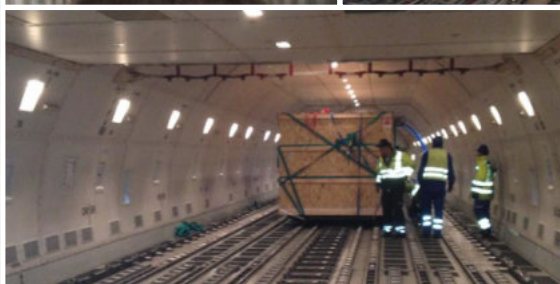
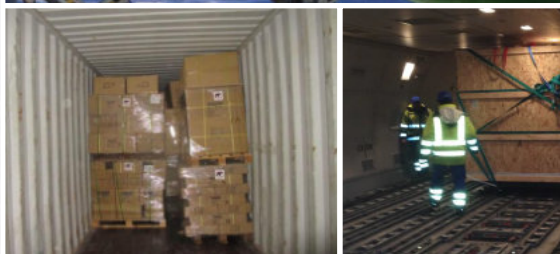
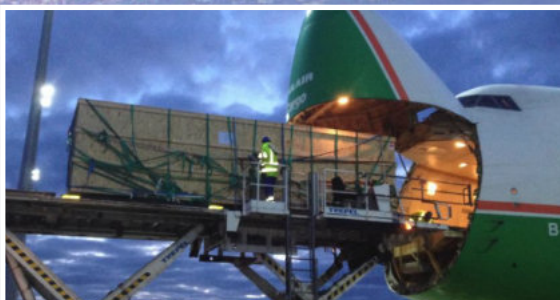
For more information and registration, please contact **Anna Foo** at email: [AnnaKo@marcusevanski.com](mailto:AnnaKo@marcusevanski.com)

**marcusevans**





# A SOLUTION-ORIENTED APPROACH AT CIRCLE DRAGON EXPRESS



**We are pleased to introduce representation in Taiwan with Circle Dragon Express Ltd. Located in Taipei and offering a full range of freight forwarding, logistics and related services, the company come recommended by current members.**

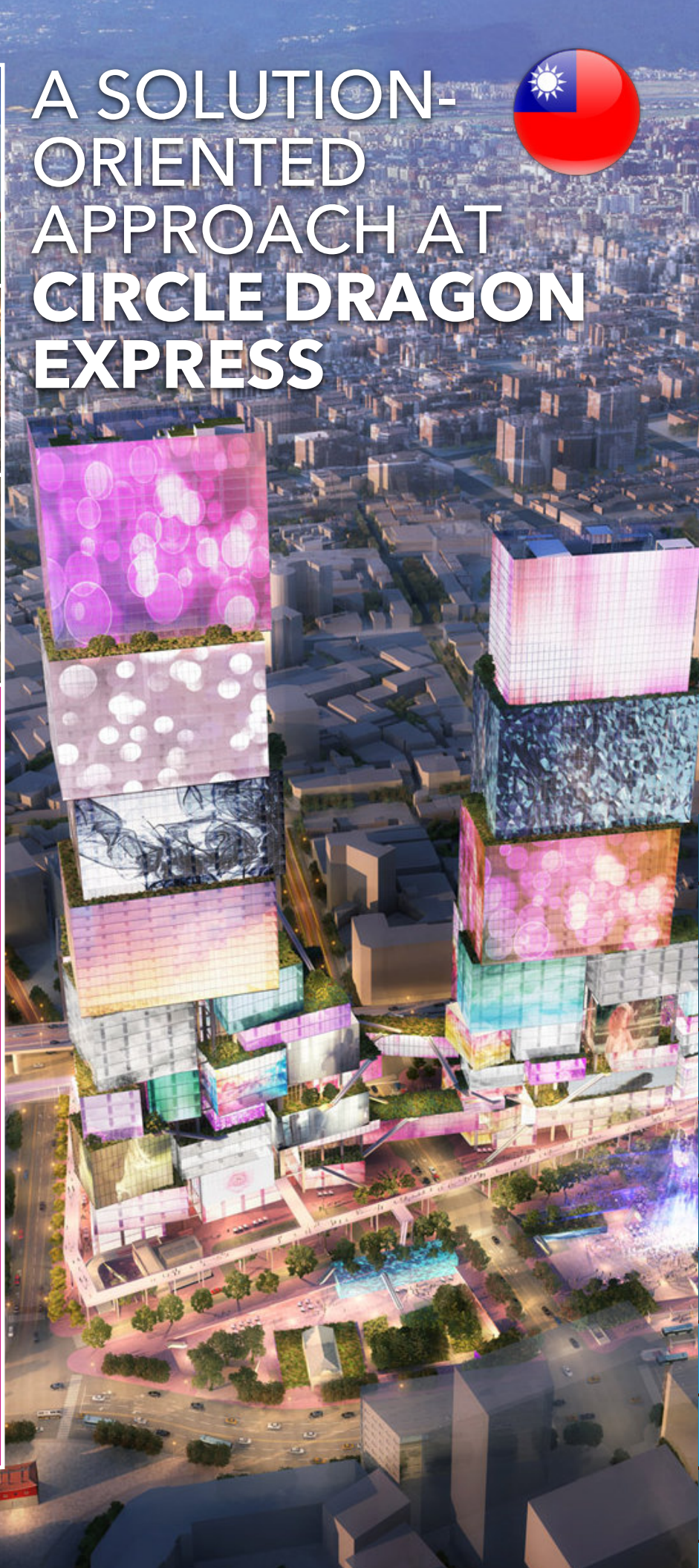
Carlos Chen (Managing Director) says: "Circle Dragon Express is an rapidly growing international freight forwarder, logistics and transport management enterprise in Taiwan, providing air, sea and road services and founded in 2007. We have gained a great reputation in the cargo market both in Taiwan and worldwide. Our services are safe, rapid, efficient, reliable, innovative and effective and we maintain good relationships with the main airlines and carriers."

"With competitive pricing and a solution-oriented approach, we offer global logistics and forwarding which can be tailored to meet specific requirements using our sophisticated systems and with prompt and constant communication. We also undertake regular professional training to improve and update all aspect of our transport services and culture and maintain professionalism and courtesy."

Photographed above is some recent work handled by Circle Dragon Express including:

- Heavy cargo by air freighter from TPE to FRA, then transit to Moscow. Cargo consisting of a tube bending machine weighing 18,860kg and measuring 7.90 x 2.40 x 2.35m.
- Weekly shipper consolidation shipment from Kaohsiung to Denmark.

[www.cdrexpress.com](http://www.cdrexpress.com)





## THE LOGISTICS SOLUTION FOR CARGO OWNERS

- discover the latest freight solutions with over 300 exhibitors under one roof
- network with the industry's elite and forge new business partnerships
- help us celebrate the best in industry at the Multimodal Awards

Registration is open

New for 2020!

A host of vertical half day seminars reflecting shipper attendance, plus a bespoke match-making service to connect shippers to each other and our exhibitors. And, with the focus on apprenticeships, training, re/upskilling, education and recruitment, Multimodal 2020 is a must attend event.

Find out more at  
**MULTIMODAL.ORG.UK**



"Personally, I always refer to customer ratings before purchasing products online. This applies to service providers too. A recent survey showed that 91% of businesses are influenced by recommendations when making a decision to use a company so we've made it super quick and easy to share feedback on our advertisers."

Rachel Crawford,  
Founder

## Exciting Relaunch of Freightbook with new Online Ratings Feature

Freightbook is enjoying an exciting relaunch with a fabulous new feature inspired by the fact that ratings are now an essential element to any online directory.

The online directory boasts additional benefits including the monthly FB Index, dedicated online news service, direct quote request leads and automatic amendments to profile pages.

Freightbook also recently launched v3.0 of their Smartphone Service at [m.freightbook.net](http://m.freightbook.net) where forwarders and suppliers to the freight industry can be found quickly on mobile devices.

CC Members are eligible for free registration. Contact [wendy@freightbook.net](mailto:wendy@freightbook.net) for details.

[www.freightbook.net](http://www.freightbook.net)



**freightbook**

LINKING TOGETHER INDEPENDENT FREIGHT FORWARDERS

27 & 28 NOV EXCEL, LONDON

**GOING GLOBAL**  
REGISTER FOR FREE TICKETS  
[SPECIALOFFERS.CO.UK](http://SPECIALOFFERS.CO.UK)

**FRUIT EXPO2020 & WORLD FRUIT INDUSTRY CONFERENCE**  
July 16<sup>th</sup>-18<sup>th</sup>, 2020  
Cairo Import & Export Fair Complex

**TRANSPORT INDIA**  
20-22 MAY 2020  
Pragati Maidan, New Delhi, India

**COASTLINK**  
13-14 MAY 2020  
Port of Antwerp 2020 Belgium

**26-28 AUGUST 2020**  
The 10th Indonesia International Shipbuilding, Offshore, Marine Equipment, Machinery & Services Exhibition & Forum 2020  
The 10th Indonesia International Trade Fair for Maritime & Offshore Industry

**24TH BALLAST WATER MANAGEMENT CONFERENCE**  
8<sup>th</sup>-9<sup>th</sup> April 2020 Rotterdam, The Netherlands

**IATA WORLD CARGO SYMPOSIUM**  
ISTANBUL, TURKEY | 10-12 MARCH 2020

**6 Pharma Supply Chain & Logistics**  
14-15 May 2020  
Government Secretariat Building, Zurich, Switzerland

**27th Maritime HR & Crew Management Summit**  
26-28 October 2020 London, UK  
For more information & registration contact: [info@maritimehr.com](mailto:info@maritimehr.com)

**10th INDIA WAREHOUSING SHOW 2020**  
18-20 JUNE 2020 | Pragati Maidan, New Delhi  
India's only marketplace for logistics professionals

**RailFreight Summit**

**FRUIT EXPO2020 & WORLD FRUIT INDUSTRY CONFERENCE**  
July 16<sup>th</sup>-18<sup>th</sup>, 2020

**TRANSPORT EVOLUTION**  
AFRICAN FORUM & SHOWCASE  
11-12 AUGUST 2020 | PORT OF MAPUTO, MOZAMBIQUE

**White Label**  
WORLD EXPO  
27 & 28 NOV EXCEL, LONDON

**FREE TICKETS**  
25-27 AUGUST 2020  
Radisson Golf & Convention Center, Batam, Indonesia

**BORDER MANAGEMENT & TECHNOLOGIES SUMMIT 2020**  
Russels, Belgium | 12-14th May 2020

**16-18 JUNE 2020**  
16th PHILIPPINE MARINE & OFFSHORE EXPO 2020  
[www.philippine-marine.com](http://www.philippine-marine.com)

**Agrofood**  
21-24 SEPT 2020  
Erbil International Fair Ground, Kurdistan - Iraq

**SECURE YOUR SPOT**  
16-18 JUNE 2020  
NEC BIRMINGHAM UK

**CeMAT**  
14-16 JULY 2020  
Melbourne Convention & Exhibition Centre, Melbourne, Australia

**INDIA'S MOST TRUSTED EVENT ON CORRUGATED PACKAGING**  
30 SEP - 2 OCT 2020  
BOMBAY EXHIBITION CENTRE, NECSA, COCHIN (E), INDIA

**AICCS**  
All India Cold Chain Seminar  
02-04 July 2020  
India Expo Mart, Greater Noida, Delhi-NCR

**FUTURE WAREHOUSE 2020**  
25th - 27th May 2020  
Melbourne, Australia

**GOING GLOBAL**  
27 & 28 NOV EXCEL, LONDON

**27 & 28 NOV EXCEL, LONDON**

**ACTIV**

**7th Pharma Supply Chain & Logistics**  
17-18 November 2020  
Boston, MA

**PROJECT IRAQ - ERBIL**  
21-24 SEPT 2020  
Erbil International Fair Ground, Kurdistan - Iraq

**SECURE YOUR SPOT**

**ERBIL INTERNATIONAL FAIR**  
21-24 SEPT 2020  
Erbil International Fair Ground, Kurdistan - Iraq

**SECURE YOUR SPOT**

**30th CNS PARTNERSHIP CONFERENCE**  
ONE FORT WORTH DALLAS-FORT WORTH, TX | 26-28 APRIL 2020

**WOMEN IN SHIPPING**  
16-17 April 2020 | Singapore

**HOMEDELIVERY WORLD 2020**  
JUNE 3-4 | PENNSYLVANIA CONVENTION CENTER | PHILADELPHIA

**MOVE**  
MOBILITY RE-IMAGINED

**25-27 AUGUST 2020**  
Radisson Golf & Convention Center, Batam, Indonesia

**27 & 28 NOV EXCEL, LONDON**

**ACTIV**

**7th Pharma Supply Chain & Logistics**  
17-18 November 2020  
Boston, MA

**PROJECT IRAQ - ERBIL**  
21-24 SEPT 2020  
Erbil International Fair Ground, Kurdistan - Iraq

**SECURE YOUR SPOT**

**ERBIL INTERNATIONAL FAIR**  
21-24 SEPT 2020  
Erbil International Fair Ground, Kurdistan - Iraq

**SECURE YOUR SPOT**

**30th CNS PARTNERSHIP CONFERENCE**  
ONE FORT WORTH DALLAS-FORT WORTH, TX | 26-28 APRIL 2020

**WOMEN IN SHIPPING**  
16-17 April 2020 | Singapore

**HOMEDELIVERY WORLD 2020**  
JUNE 3-4 | PENNSYLVANIA CONVENTION CENTER | PHILADELPHIA

**MOVE**  
MOBILITY RE-IMAGINED

**25-27 AUGUST 2020**  
Radisson Golf & Convention Center, Batam, Indonesia

**27 & 28 NOV EXCEL, LONDON**

**ACTIV**

**7th Pharma Supply Chain & Logistics**  
17-18 November 2020  
Boston, MA

**PROJECT IRAQ - ERBIL**  
21-24 SEPT 2020  
Erbil International Fair Ground, Kurdistan - Iraq

**SECURE YOUR SPOT**

**ERBIL INTERNATIONAL FAIR**  
21-24 SEPT 2020  
Erbil International Fair Ground, Kurdistan - Iraq

**SECURE YOUR SPOT**

**30th CNS PARTNERSHIP CONFERENCE**  
ONE FORT WORTH DALLAS-FORT WORTH, TX | 26-28 APRIL 2020

**WOMEN IN SHIPPING**  
16-17 April 2020 | Singapore

**HOMEDELIVERY WORLD 2020**  
JUNE 3-4 | PENNSYLVANIA CONVENTION CENTER | PHILADELPHIA

**MOVE**  
MOBILITY RE-IMAGINED

**25-27 AUGUST 2020**  
Radisson Golf & Convention Center, Batam, Indonesia

## EXHIBITION COLLABORATIONS SECURED

Cargo Connections proudly collaborate with many of the world's top freight related exhibitions and events. Here are some of the collaborations we have secured. If you are interested in discussing a Media Partnership, please email us.



Our 5th Annual Assembly will take place from 27-29 November 2020 at the Outrigger Laguna Phuket Beach Resort, situated on Bangtao Beach between a tropical lagoon and the sparkling waters of the Andaman Sea - this beachfront property is designed to be a luxurious haven for our meeting.



# 5th ANNUAL ASSEMBLY

## 27-29 NOVEMBER 2020 THAILAND



### FRIDAY 27 NOVEMBER

We have arranged a fantastic start to our event, which is a change from our usual schedule. We will all meet at 17:30 on Friday 27 November for a coach trip to Siam Niramit to watch a world-class performance of Thailand's arts and cultural heritage. We will enjoy a fresh Thai and international buffet dinner and see many pre-show attractions such as traditional music and dancing performances, kick boxing show, grand parade with elephants and elephant rides. We will then settle into our upgraded Platinum Seats to be entertained by the spectacular show featuring over 100 performers, lavish costumes and stunning set designs. We will then depart back to the hotel at 22:00.



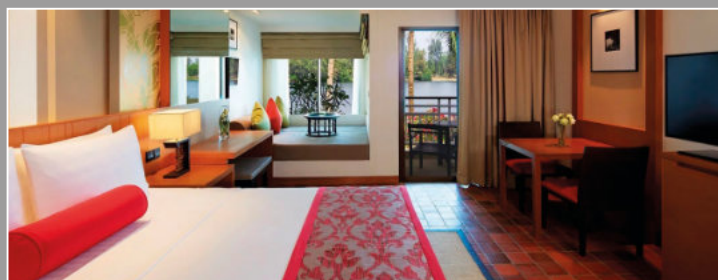
### SATURDAY 28 NOVEMBER

Our meeting will take place in the grand Similan Ballroom and all delegates will gain access to our online Meeting Manager program so that 20-minute business meetings can be arranged prior to arrival. At 14:00 we will take part in a combination of team building activities and compete in friendly competition with fun being the main focus. After an entertaining afternoon, there will be time to rest before we meet at 19:00 for a drinks reception by the upper pool/Edgewater. We will then enjoy a dinner feast and be entertained by a Human Puppet, Thai Regional Dance Acts and a Bang Rachan Show. The evening will include soft drinks, fruit juices, beer, house wine, gin, rum, tequila, vodka, whisky and mixers.



### SUNDAY 29 NOVEMBER

Our official meeting will continue with 1-2-1 meetings where delegates highlight their specialist areas, discuss cross trade, existing and new business as well as information regarding their country's regulations and requirements. These crucial meetings also provide an opportunity to share key import and export trade information.



### GUEST ROOMS

Lagoon View rooms (43m<sup>2</sup>) with sunken bathtub and showers are available to delegates at Single Lagoon View THB 6,700 (approx. USD 211) net per room per night; Twin/Double Lagoon View THB 7,200 (approx. USD 227) net per room per night. Room Rates include a full buffet breakfast and the 10% service charge, 7% VAT and 1% provincial tax (equal to 18.7%).

### REFRESHMENTS

Morning coffee breaks include freshly-brewed coffee, a selection of regular and herbal teas and an assortment of croissants, sandwiches, Danish pastries and muffins. Afternoon coffee breaks include freshly-brewed coffee, a selection of regular and herbal teas, and an assortment of snacks including fruits, curry prawn fritters, deep-fried sesame chicken wings, and smoked salmon and cream cheese bagels. Lunch with soft beverages will be taken in Locavore restaurant.

### WEATHER & DRESS CODE

The month of November is a great time to visit Phuket! The weather shows clear signs of the rainy season coming to an end, with the sunny high season beginning. Temperatures vary between 23°C - 30°C. For the Gala Dinner, we advise smart casual attire. We recommend a business suit for the start of our meeting as our Official Group Photo will be taken at 10:00. Thereafter, the meeting attire is business casual (no ties needed!). Phuket is among the world's finest beach destinations, with fine white sands, nodding palm trees, glittering seas and lively towns. Why not extend your stay and enjoy the island.



# WOMEN IN SHIPPING

16-17 April 2020 | Singapore

- MCF Grant Approved
- 1+1 Delegates Offer

Brought to you by:



1, 2 & 3 SEPTEMBER 2020 POZNAN, POLAND

THIRD EDITION

## SHIFTING TO RAIL

Due to its geographic importance, the region in and around Poland is developing in rapid pace. A network of hubs is in the making, connecting countries such as Poland, Czech Republic and Slovakia to Western Europe, China, the Baltic states and the Adriatic coast. How do you become a freight hub?

### FIRST SPEAKERS ANNOUNCED



**RADOSŁAW PACEWICZ**  
Vice President Polish  
Office for Railway  
Transport



**JANA PIERIEGUD**  
Head of the Department  
of Infrastructure and  
Mobility Studies, SGH  
Warsaw School of  
Economics



**IZABELA KACZMARZYK**  
Project coordinator  
Poland for the Baltic  
Adriatic Core Network  
Study for DG MOVE,  
European Commission

MORE INFO AND TICKETS: [WWW.RAILFREIGHTSUMMIT.COM](http://WWW.RAILFREIGHTSUMMIT.COM)



The 3<sup>rd</sup> Indonesia International  
Transport, Logistics, Equipment and  
Services Exhibition 2020  
[www.logistics-indonesia.net](http://www.logistics-indonesia.net)



The **INDONESIA's** Most Important  
Transport & Logistics Event Solutions

**26-28 AUGUST 2020**

JIEKPO KEMAYORAN, JAKARTA - INDONESIA

Organized by:



**GEM INDONESIA**  
(PT. Global Expo Management)

GRAHA GEM

Citypark Business District (CBD) Blok A No. 05 - 07, Mutiara Terasa Palom  
Jl. Karet Raya Outer Ring Road, Jakarta Barat 11730 - Indonesia  
Tel: +62-21-54350119 Fax: +62-21-54350119  
E-mail: [info@gem-indonesia.net](mailto:info@gem-indonesia.net) Website: [www.gem-indonesia.net](http://www.gem-indonesia.net)



## PROJECT OMAN

**12 - 14 OCT 2020**

OMAN CONVENTION & EXHIBITION  
CENTRE, MUSCAT

[WWW.PROJECT-OMAN.COM](http://WWW.PROJECT-OMAN.COM)

**SECURE YOUR SPOT**





## WOP DUBAI 2020

Middle East's Festival for Fruits and Vegetables

Register your interest: [WWW.WOP-DUBAI.COM](http://WWW.WOP-DUBAI.COM)

# NOVEMBER 10.11.12 2020

Dubai World Trade Centre

CONNECTING FRESH BUSINESS IN THE MIDDLE EAST

Organized by:



Strategic Partner:



Venue Partner:



FOLLOW US IN SOCIAL MEDIA: [f](https://www.facebook.com/planetfair) [i](https://www.instagram.com/planetfair) [in](https://www.linkedin.com/company/planetfair)



PORTS



RAIL



ROAD

## TRANSPORT EVOLUTION AFRICAN FORUM & EXPO

### 13 – 14 OCTOBER 2020

DURBAN ICC, SOUTH AFRICA



## BOOK YOUR SPACE



PORTS



RAIL



ROAD

## TRANSPORT EVOLUTION MOZAMBIQUE FORUM & SHOWCASE

### 11 – 13 AUGUST 2020

PORT OF MAPUTO, MOZAMBIQUE



## BOOK YOUR SPACE

## Agriculture 4.0

INDUSTRIES



## THE FUTURE OF AGRICULTURE

### SHAPING THE FUTURE OF ADVANCED PRODUCTION FOR AGRIBUSINESSES

7 - 8 September 2020 | Miracle Grand Convention Center, Bangkok, Thailand

#### Key Discussion Areas:

- ▶ Enabling Technologies in Agriculture - Part I
- ▶ Enabling Technologies in Agriculture - Part II
- ▶ Revolutionise Agri-business Supply Chain Management
- ▶ Disruptive Technologies in Farm and Plantation Management
- ▶ Advancing Productivity Through Smart Manufacturing

Download **Confexhub** apps on



Co-organized by:



Supported by:



Gold Sponsor:



Knowledge Partner:



Endorsed by:



Agriculture 4.0 Secretariat | c/o Confexhub Group  
+603 2771 1668 | +603 2771 1669 | [conference@confexhub.com](mailto:conference@confexhub.com) | [www.agriculture4pointzero.com](http://www.agriculture4pointzero.com)  
Agriculture 4.0 | Agriculture 4.0 | @a4\_agriculture



T: + 44 2392 425204  
F: + 44 2392 356281

E: [rachel@cargoconnections.net](mailto:rachel@cargoconnections.net) W: [www.cargoconnections.net](http://www.cargoconnections.net)

Global Cargo Connections Ltd trading as Cargo Connections  
Registered in the UK, Company No 9127025  
ISO 9001 Reg No 205364; ISO 14001 Reg No 205366